

CSA News

The Creation Science Association for Mid-America

"It is better to trust in the Lord than to put confidence in man" Psalm 118:8

Volume 24 (2) Mar - Apr, 2007

2007 - CSA's 24th Year by Tom Willis

While several of the men who eventually formed CSA had been speaking on the subject for several years, our first public meeting, as CSA, was held in December 1983. Since then our ministry has taken the following forms:

CSA News began as a monthly, one-page flyer announcing our meetings and other public events. We never intended it to become a large publication, but did feel that it should contain at least one article of substance on the subject of origins. Thus, early on we cut back to bi-monthly and began including one educational article, which has resulted in many subscribers outside the central USA region where we concentrate our other activities. We have gotten many positive comments over the years. One of our favorites, and not that uncommon, is "I always read CSA News first."

We have always known that the Scripture teaches, "You shall not muzzle the ox that treads out the grain." However, we do not read in that passage, or others, the notion that the ox should stand around waiting to be fed until he is paid for services he has not yet performed. Therefore, our practice in all our work is to perform the services we feel led to provide and allow the Lord to provide the grain. Therefore, we do not charge for any of our services, except for book/video sales.

CSA Monthly Meetings - Except for a couple of Augusts, we have, for these 23 years, conducted monthly meetings, open to the public in the metropolitan Kansas City, Missouri area. Some of these have been held on the Missouri side, lately across the border into Kansas, but always near a major loop highway (see last page, where our current location and next two meetings are described). These are intended for all ages, but, on occasion, we have conducted a special teen session in another room. Which we are presently doing. Occasionally the main meeting topic is a little heavy for grammar school children. Usually the parent can tell from the topic, but, if you have a concern, feel free to call.

CSA Creation Safaris - As indicated above, right, and on the next page, in 2007 CSA leaders will conduct 17 Family Creation Safaris. Since they are briefly described on page 2, including where to get detailed information and costs, we will not dwell on them here. We do not charge for the Safaris, but, some costs are associated with the travel and, on some Safaris, accommodations, food, etc. Thousands of people, of all ages, have attended CSA Safaris over the years.

CSA Seminars - CSA typically has available about 10 qualified speakers. We make it a point to serve any sized group, from public seminars, church seminars, individual class seminars, home-study and home-school groups, etc. Attendance varies from a dozen to over a thousand. Seminar topics vary from brief overviews of the topic of origins to comprehensive seminars. We believe that to adequately discuss the critical issues involved, several important topics need to be discussed. While we often do less in-depth presentations, an outline of what we consider a complete presentation of the topic will help you understand what we think is needed to thoroughly cover the topic. In all key topics,



17 Safaris in 2007 - See Page 2

Fun, Educational, Recreational, God-Honoring

we present the Biblical exegesis that accurately describes God's position on these issues:

A Comprehensive CSA Seminar

- ❖ History of the World As Told By the World
- ❖ History of the World As Told By God
- ❖ Is Creation Relevant - to Individuals, to Nations, to the Church?
- ❖ What is Science and How Does it Apply to Origins?
- ❖ The Origin of Fossils, Rocks and Geologic Formations
- ❖ The Origin of Life
- ❖ The Origin of Kinds of Plants and Animals
- ❖ The Great *Proofs* of Evolution, Are They Science?
- ❖ The Origin of Man - Ape Men, Science or Myth?
- ❖ Dinosaurs - Their Origin and Destiny
- ❖ The Age of the Earth - The Longest Myth
- ❖ Conclusion

Many Other Topics Are Available, a Sampling is Below

- ❖ The Origin of Caves and Cave Formation?
- ❖ Science: The False God
- ❖ Information in Nature - Where did it come from?
- ❖ Is Creation Science?
- ❖ They Are Without Excuse - Design in Nature
- ❖ Geologic Evidence for a Young Earth
- ❖ Radiometric Evidence for a Young Earth
- ❖ The Ice Age - Where Does It Fit?
- ❖ New Light from The Hubble Telescope
- ❖ The Genesis Flood - Religious Myth or Historical Fact?
- ❖ X-Rays, N-Rays and Creation
- ❖ Origin of the Universe
- ❖ The Origin of Kinds: Is Medical Research Consistent With Evolution?
- ❖ Stellar Evolution? - The Origin of Galaxies
- ❖ "UFO's, ET's and the Bible"
- ❖ The Puzzle of Ancient Man - The Mysteries of Ancient Civilizations

If you, or your group would like a talk, or a complete seminar, please contact us call, email, write or use a web form. See last page.



CSA Creation Safaris for 2007

Fun, Educational, Recreational, God-Honoring

For more details, see end of page.

CSA Family Creation Safaris, a ministry of the Creation Science Association for Mid-America, are family recreational outings with educational sessions designed to help families learn the truth about creation and evolution, the importance of origins to individuals, nations and the Church, and ways to defend the truth. For More Information: Get the CSA Creation Safari Detail Booklet from the Creation Safaris Page at www.csama.org, or call or write: CSA, 22509 State Line Road, Cleveland, MO, 64734. (816) 618-3610, or csahq@juno.com.

The Lord willing, **Creation Safaris** should be great this year. Designed for all ages and educational levels, these outings are attended and enjoyed by toddlers to octogenarians, singles, families, youth or church groups. Safari size varies from a dozen to over a hundred. Everyone has a good time and brings back something of eternal value. Reserve your slots early. **See end of this article!**

March 23 (Friday) 7:15 - 9:15PM - Astronomy Safari

Note: Astronomy Safaris are held at The Berry Patch, 22509 State Line Road. Each Astronomy Safari consists of an inspiring slide seminar followed by a tour of the heavens using tracking telescopes and binoculars. For more information, get the Safari Detail Booklet, which also contains a map to the safari site (see below).

April 13 (Friday) - 8:00 - 10:00PM - Astronomy Safari

Note: See March 23 Astronomy Safari for more details.

April 28 (Saturday) 8AM - 6PM - East Kansas Fossils & Coal - A day trip to the coal mining region of SE Kansas - great exploration, excellent evidence for the Genesis Flood, and, fun for all ages. New this year, we will be touring the Tri-State Mineral Museum in Joplin.

May 18 (Friday) - 8:30 - 10:30PM - Astronomy Safari

Note: See March 23 Astronomy Safari for more details.

May 26-28 (Sat - Mon) - Western Kansas Chalk and Fossil Beds One of the most famous chalk and fossil beds in the world. Visit Wildcat Canyon, Castle Rock, volcanic ash beds, and numerous other chalk and fossil beds. Bring home all the fossils you can carry.

June 16 (Saturday) - 8:30 - 10:30PM - Astronomy Safari-

Note: See March 23 Astronomy Safari for more details.

June 21 - 23 (Thurs-Sat) - Ozark Stream Float Trip - Camp, canoe and swim in the beautiful Gasconade River in the heart of the Missouri Ozarks. Enjoy a delightful weekend, and grow in grace and knowledge of river and canyon formation; what purifies our atmosphere; and the awesome "evidence for God's eternal power and deity" Rom 1:20

July 14 (Saturday) - 8:30 - 10:30PM - Astronomy Safari

Note: See March 23 Astronomy Safari for more details.

CSA Family Creation Safari's for 2007

July 21 (Saturday) - 9:00AM-4:00PM - KU Natural History Museum Fossil hunting, picnic, and a truly rare experience... God-honoring tour of a Natural History Museum.

August 12 (Sunday) - 8:30 - 10:30PM - Astronomy Safari
Note: Perseid Meteors See March 23 Astronomy Safari.

August 18 (Saturday) - 10:00AM - 2:30PM - Rock Bridge Cave Tour - A truly "wild" cave, i.e., no fancy sidewalks or lights. We bring our own lights. One of Missouri's longest caves in the heart of Missouri's famous Karst region (a region marked by caves, sinkholes, natural bridges, underground rivers, etc.)

Aug 31-Sept 3 - SE Missouri/Johnson's Shut-Ins

(Fri - Mon) Our most popular safari with all ages. Visit, swim and play in some of the world's most interesting geologic formations: Johnson's Shut-ins and the Taum Sauk Mountain disaster, Elephant Rocks ("elephant-shaped" granite formations), Silver Mines, Devil's Honeycomb all while learning how these formed quickly.

September 14 (Friday) -7:30 - 9:30PM Astronomy Safari

Note: See March 23 Astronomy Safari for more details.

September 29 (Sat) - 9AM - 4PM - KC Fossils & Rocks

Start your own fossil collection, we will help you identify and catalog your finds from fossil beds all over the Kansas City area.

October 12 (Friday) - 7:15 - 9:15PM - Astronomy Safari

Note: See March 23 Astronomy Safari for more details.

October 20 (Saturday) - 9:00AM - 6:00PM - KATY Bike

Trail - Bicycle Trip along the beautiful Missouri River bluffs near Boonville, MO. Fall colors, explore the cause and age of the Missouri River valley.

November 9 (Friday) - 7:15 - 9:15PM Astronomy Safari

Note: See March 23 Astronomy Safari for more details.

December 12 (Wednesday) - 9:00 -11:00PM Astronomy

Safari. Geminid Meteors Note: See March 23 Astronomy Safari.

Join A CSA Creation Safari in 2007

Hundreds of people enjoyed CSA Creation Safaris in 2006, thousands have participated over the years. We look forward to having you, your family and/or your group, join us this year. We will both be blessed if you do!

Get the Booklet: 2007 Family Creation Safaris

Visit www.csama.org, see "**Creation Safaris**," or call (816) 618-3610 or e-mail csahq@juno.com, or write to CSA, 22509 State Line Road, Cleveland, MO 64734.

CSA does not charge for Safaris, but depending on the outing, there can be costs associated with the places we visit. Read the detail booklet carefully for dates, times, where to meet, what to bring and estimated costs.

To receive "CSA News," you must request to be on the mailing list.

CSA does not charge for Safaris, the Safari Booklet, or CSA News, but all are expensive to produce. Tax free contributions are gratefully accepted. Depending on the event Safaris are attended, occasionally, by as few as a handful to over a hundred. To properly plan an outing, we must know who and how many will attend. To attend a safari, you must register via phone, mail, email or the Safari page at www.csama.org.

Use this coupon to request:	Quantity	Amount
Lending Library Catalog	_____	Contribution
Book, audio and video tape catalog	_____	Suggested
Reprints of feature articles from CSA News: (1 copy - \$1.00, 20 - \$4.00, 100 - \$17.00)	_____	_____
Audio/Video Special Mar - Apr, 2007)	_____	_____
Meeting Videos (specify date or #)	_____	_____
Meeting Audios (specify date or #)	_____	_____
Other items	_____	_____
Membership	_____	_____
Postage: \$1.50/audio, \$2.00/ book or video	_____	_____
Total	_____	_____
My E-Mail address: _____		

Join and Support CSA

Thousands of people receive CSA News, which is free for the asking. Please consider supporting our work. Many say, "Of all my mail, I read CSA News first." If you don't benefit, help us be good stewards by removing your name. Write or call:

CSA, 22509 State Line Road, Cleveland, MO 64734

Phone: (816) 618-3610 FAX: 1 - (816) 658-3253

Important: The phone is a KC phone, FAX is not.

Full Membership: \$17.00 per year

Sustaining Membership: \$100 per year

Associate Membership: \$5.00 per year

(Membership not required to participate)

Cut out coupon at the left, return with your address label

Send CSA News to me (Check one): _____ via E-mail, _____ via Postal Mail _____ Discontinue CSA News

Real Scientists Just Say NO!

By Tom Willis

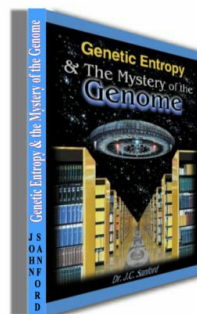
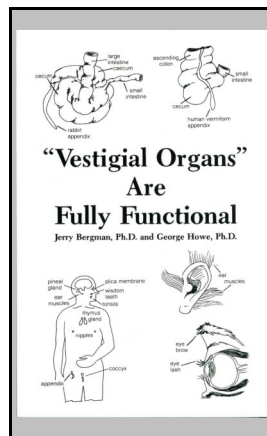
Help your family and friends understand Creation/Evolution in a way that they will never be deceived again! The book examines stereotypical evolutionary "reasoning" rather than dwelling on the latest "discoveries." There are many good books, but this one will greatly reduce the number you need to read. If you don't agree, return it in good condition for a refund.

133 large pages, soft cover: \$15.50



By the year 1900 evolutionists were claiming about 180 organs carried by humans that were mere vestiges of their evolutionary past, and countless doctors obediently removed them. While many have rejected the doctrine, it still remains in most textbooks, in spite of the fact that every one of these organs is known to serve an important Human purpose. This book is a valid, simple study in what passes for "science" in evolutionist circles.

Jerry Bergman, PhD and George Howe, PhD. 100 pages. \$11.00



Genetic Entropy The Mystery of the Genome

Dr. John C. Sanford, Cornell, Univ holds many patents in genetic engineering, including the gene gun, the science's most useful tool. His position in this book may be summarized as: "Mutation and Natural Selection, the purported cause of evolution, cannot even sustain the genome, much less create it. Evolution is not science, it has no mechanism."

208 pages, soft cover, illustrated - \$16.00

CSA Bumper Stickers: 3-3/4" x 17"

Black on Bright Yellow,

Price: 1: \$1.75, 5: \$7.00, 10: \$13.00, 50: \$50, 100: \$70



Proceedings of the International Conferences on Creation

"Real Treasures of Apologetic Science"

2003 Proceedings (includes CD-ROM with .PDF copies of the papers) Hard bound, 597 Pages - \$39.95 + \$5.00 Postage
1990, 1994, or 1998 Proceedings - \$19.95 + \$5.00 Postage

Too Far Away To Attend CSA Meetings? Why Not Attend Via Audio or Video Tape

Attend CSA Meetings by ordering the Audio (\$5.00) or Video (\$14.00) tape. Specify the meeting date, topic, or item number (at the end of the meeting announcement), e.g. V0188 (Video). Meeting tapes may also be checked out of the Lending Library:

The CSA Lending Library

(Librarian: Larry Rink)

8904 Mastin, Overland Park, Ks 66212, (913) 492-6545

Subscriptions to CSA News

Thousands of people receive CSA News. We do not charge for CSA News, but you must request to remain on the list at least every two years, which you may do by snail or electronic mail. Both methods require a full address, and, please keep your address current.

Are You Participating in CSA As Much as You Should?

"The harvest is plentiful, but the laborers are few." Are you doing all the Lord has called you to do in the war for the minds and hearts of our citizens... especially our youth? CSA is not a closed fraternity. Any born-again believer who is abiding in the words of Jesus, and has been gifted in research, computers, speaking, clerical activities, writing of articles or book reviews, etc., and who has heard a call to serve in an origins ministry should consider and pray about serving with us. Write or call for more information.

© Copyright 2007

**The Creation Science Association
for Mid-America**

22509 State Line Road, Cleveland, MO. 64734
Phone: (816) 618-3610 FAX: 1-(816) 658-3253
www.csama.org Email: csahq@juno.com

Non-profit Org
U.S. Postage Paid
Permit #2
Cleveland, MO

Presort Standard

Current resident or...

CSA Monthly Meeting Location: Westbrooke Church 9898 West 95th, Overland Park, KS

Four blocks East of 69 Highway (or Switzer) on North side of 95th Street

Fellowship & Book Table: 6:15PM - Meeting: 7:00PM Nursery Available: \$2.50 per child (Reservations required for nursery)

CSA Meeting - Tuesday, Mar 6, 2007

The 11 Great Proofs of Evolution - I

By: Tom Willis, BS, MA

From Darwin to Museums, to high school and college texts, these 11 *Proofs of Evolution*, when any *proofs* are given, are virtually always parroted. They are typically presented far less competently than we will, yet always accompanied by the claim that they transform evolution from "theory" [it is not] to fact [the claim is a joke]. This month we will cover the *Proofs* from: Change, Natural Selection, Adaptation, the Fossil Record and Rocks, and Homology.

We intend to, rather easily, show that these *proofs* are all Magic, not one is science. Magic is the skilled art of creating an illusion that the audience has seen evidence which demonstrates that a myth is true ("I will saw the woman in two," "Millions of years ago fish turned into lizards.").

Order Audio (\$5.00) or Video (VHS) \$14.00: A0267/V0267

CSA Meeting - Tuesday, Apr 3, 2007

The 11 Great Proofs of Evolution - II

By: Tom Willis, BS, MA

In Part II we will wrap up the 11 Great Proofs with the *Proofs* from: Ranking, Vestigial Organs, Embryonic Recapitulation, Imaginative Evidence Production (which is ubiquitous), Outright Fraud, and Sub optimality (or Gould's Delite). Again you will find it obvious that these *proofs* are Magic, not science. (See description of Great Proofs - I, Mar 6, 2007 CSA meeting.)

**Order Audio (\$5.00) or Video (VHS) \$14.00:
A0268/V0268**

Moving, or changing your e-mail address?

Be sure to let us know to help us avoid unnecessary costs and to insure you continue to receive CSA News.

CSA Creation

Safaris

See page 1



CSA Lending Library

The CSA Lending Library now has over 240 videotapes, 120 audio tapes, and 80 books all available without charge. The new **Lending Library Catalog** now contains 10 pages of great tools. If you would like a copy, please consider sending a contribution to help defray costs.

-- Visit CSA at www.csama.org --

**CSA
Real Scientists
Just Say NO!
Seminar**

**Have you had one in
your Community,
School or Church?**



Contact CSA for info.

©1991 CSA Mid-America